

Clarus Regional Demonstration

Use Case #1: Enhanced Road Weather
Forecasting Enabled by Clarus

Use Case #1 Enhanced Road Weather Forecasting Enabled by *Clarus*

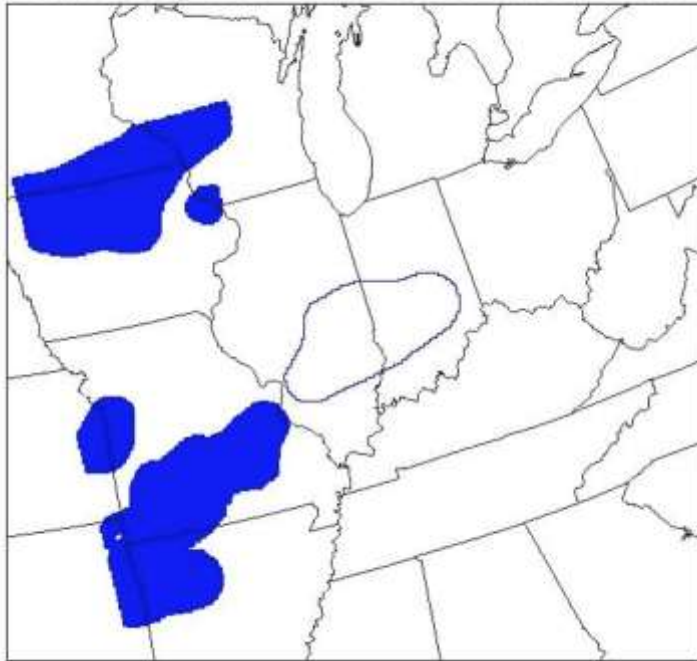
- **Two primary objectives**
 - Assess the impact of *Clarus* data on weather and pavement predictions
 - Provide enhanced *Clarus*-enabled forecasts for utilization in the Non-winter Maintenance and Operations Decision Support Tool and the Multi-state Control Strategy Tool.

Methods

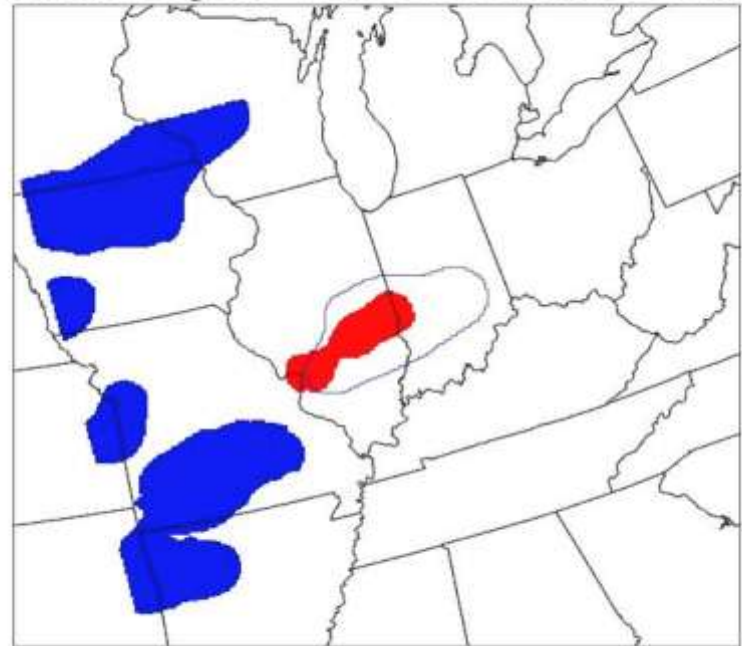
- **GRIDDED MODEL RUNS** - For each test event, a WRF spatial forecast was generated for each twelve hours, with the forecast being rerun every six hours
- **POINT ROAD FORECASTS** - An RWFS/METRo point forecast was generated for each hour for the next 8 days, with the forecast being rerun every hour
- Chosen test cases for high impact events of rain, wind, snow, cold and warm extremes.

Heavy Rain case - Precipitation

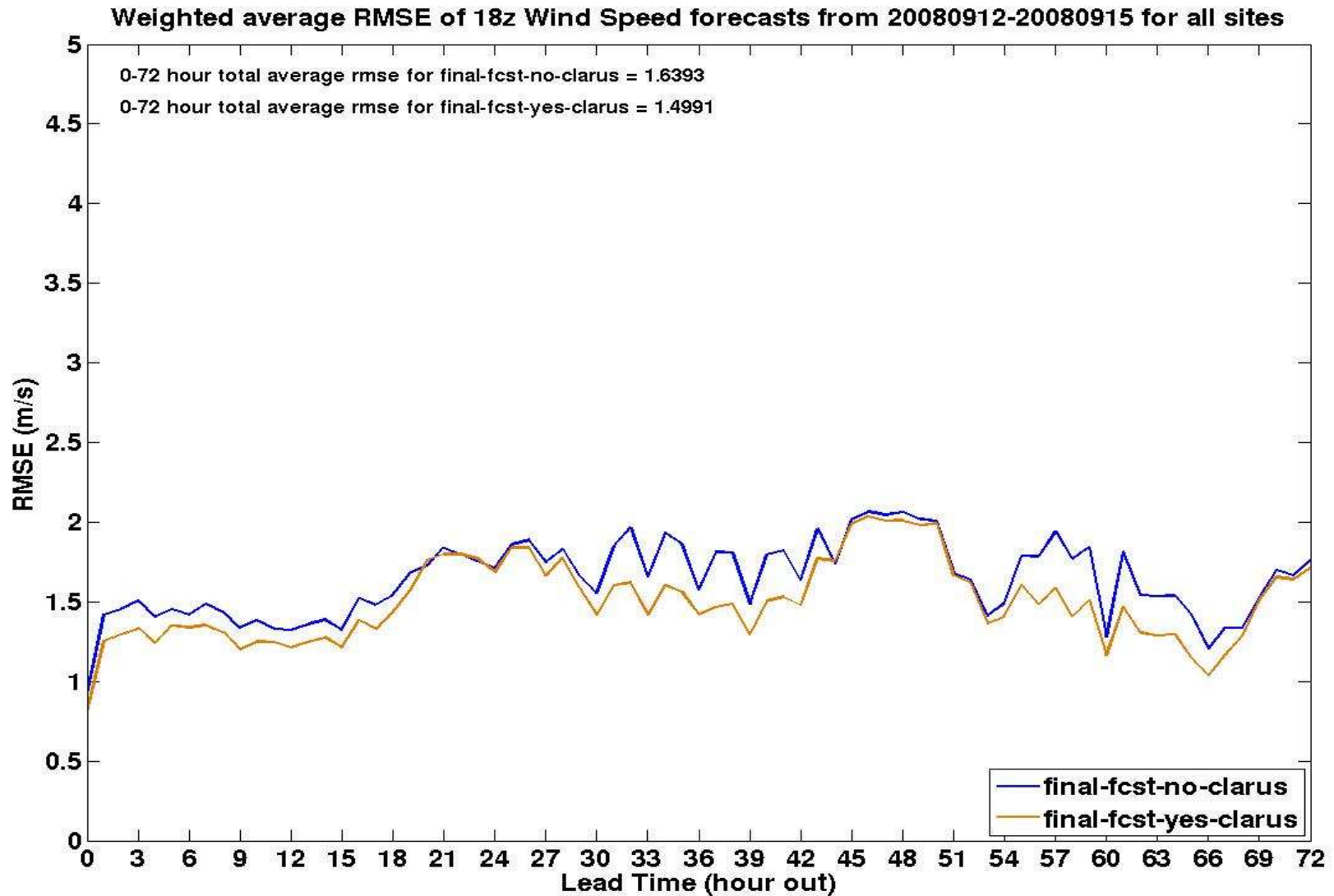
Forecast Objects with Observation Outlines



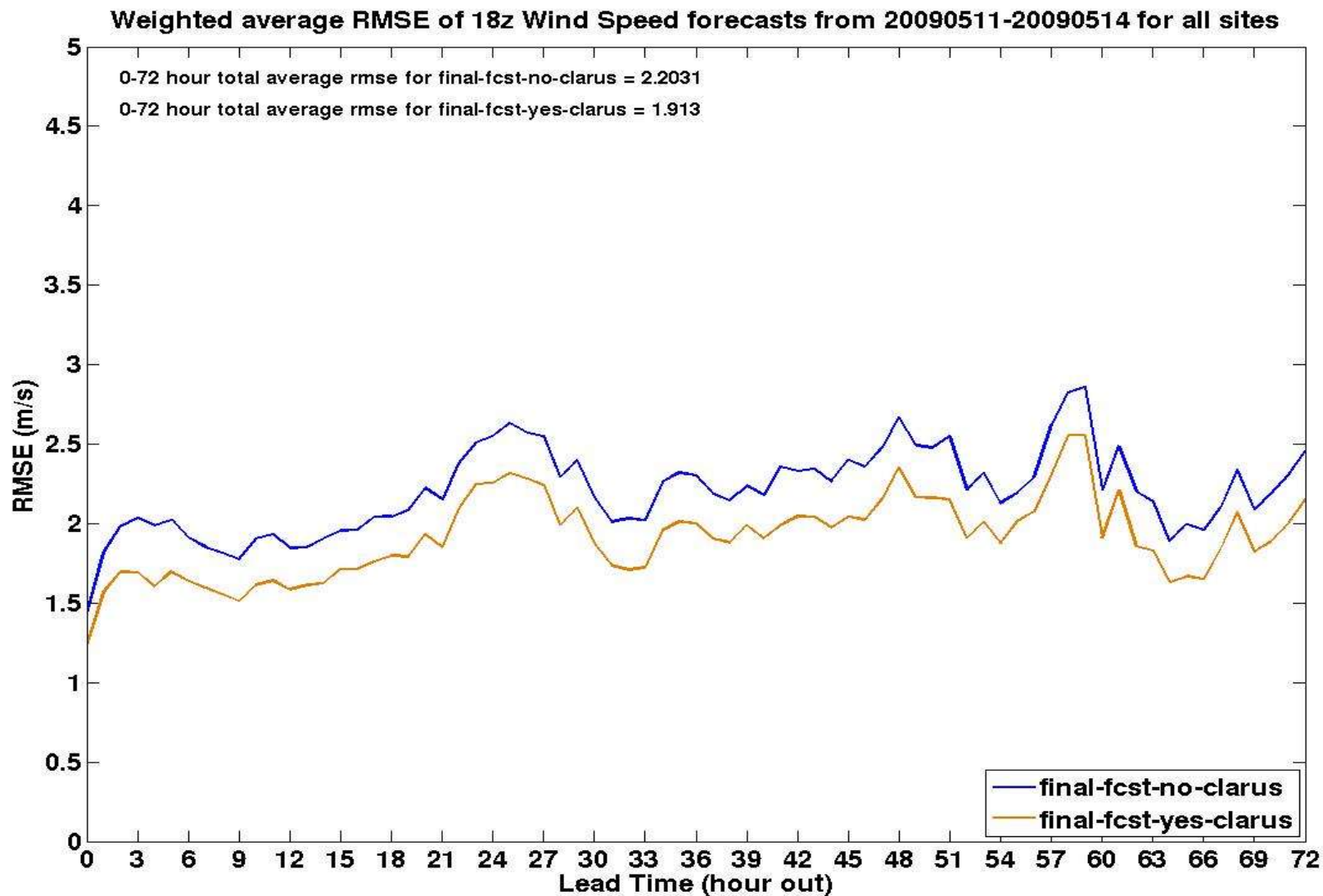
Forecast Objects with Observation Outlines



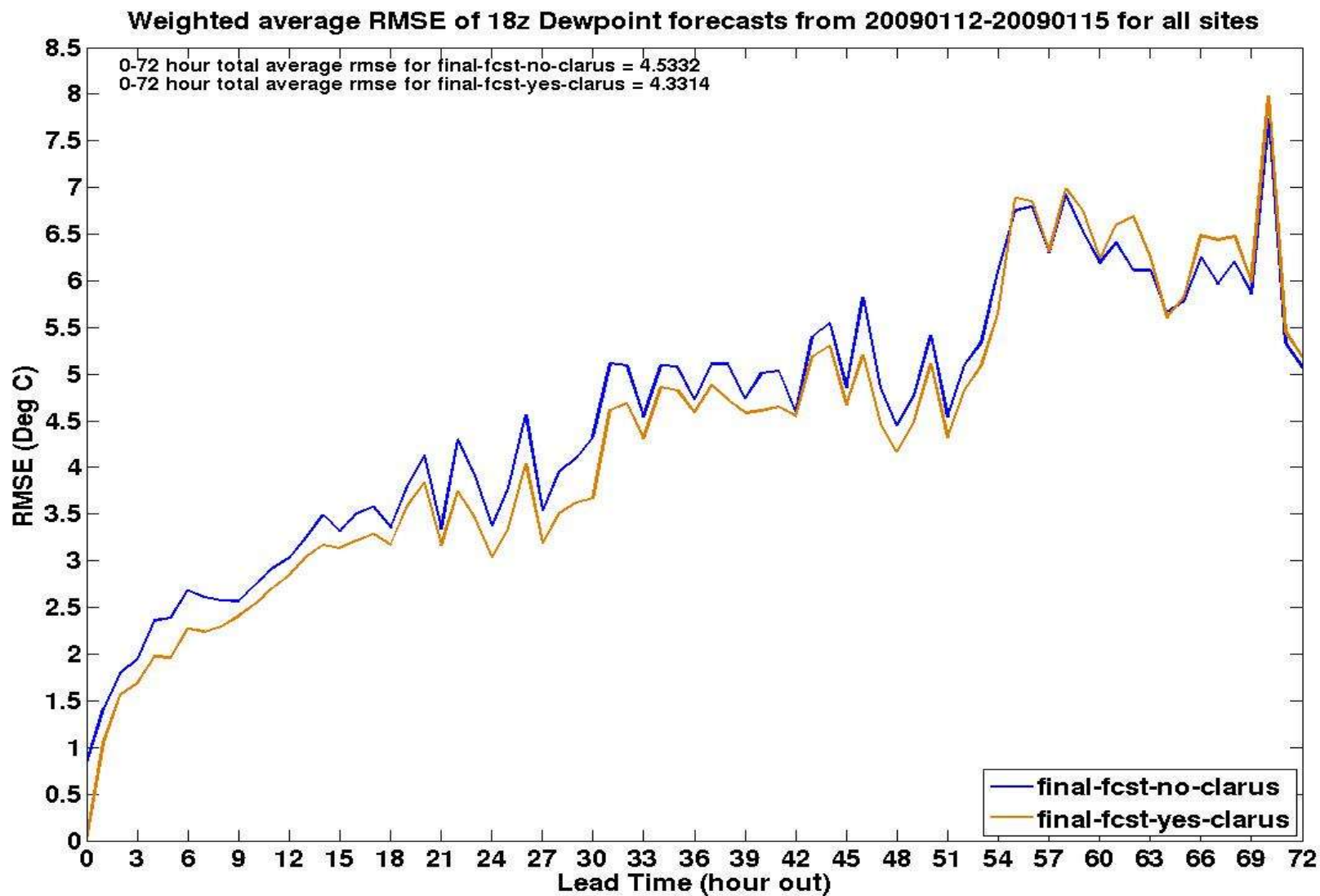
Wind/Precip case - Hurricane Ike



Squall line case

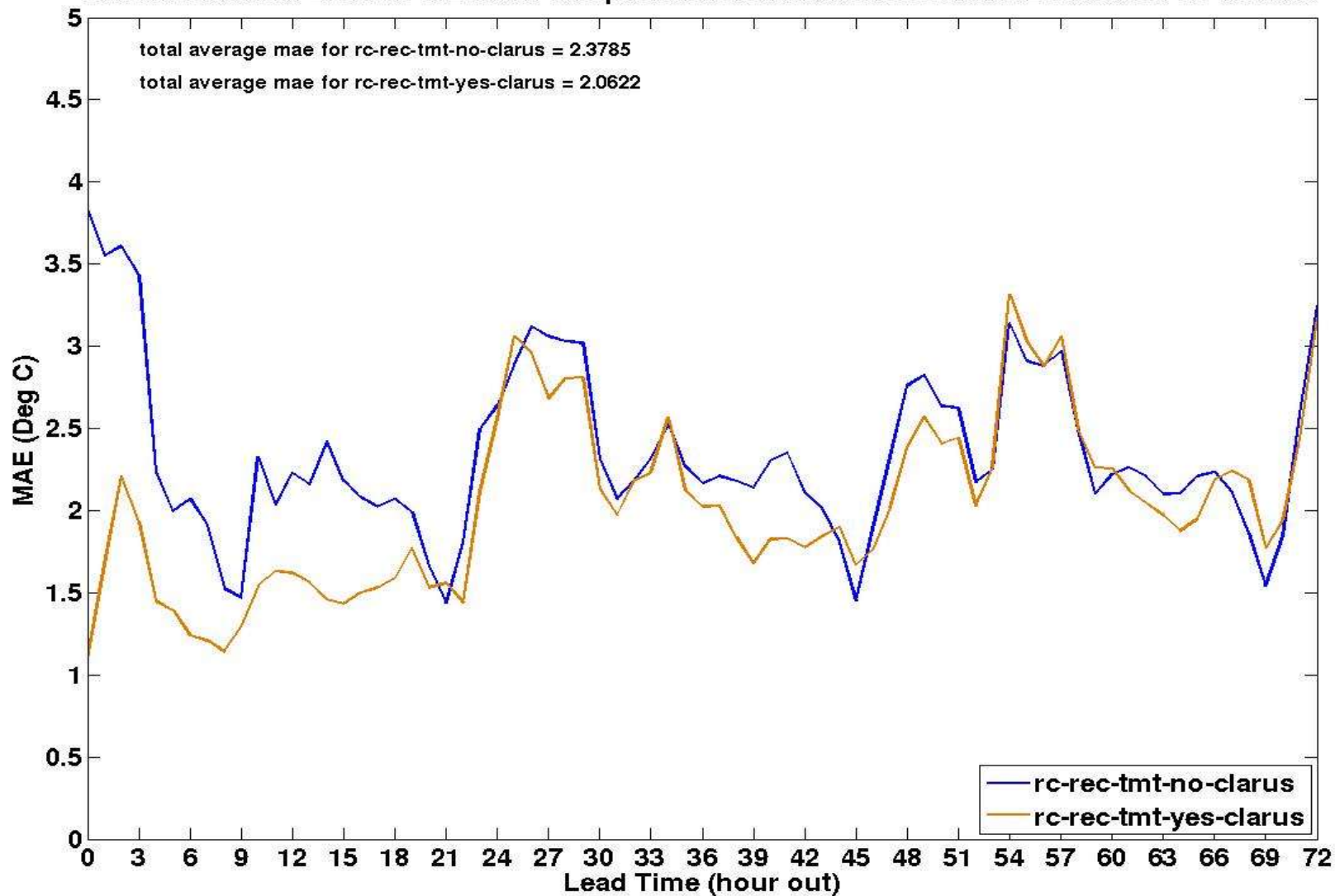


Cold Case

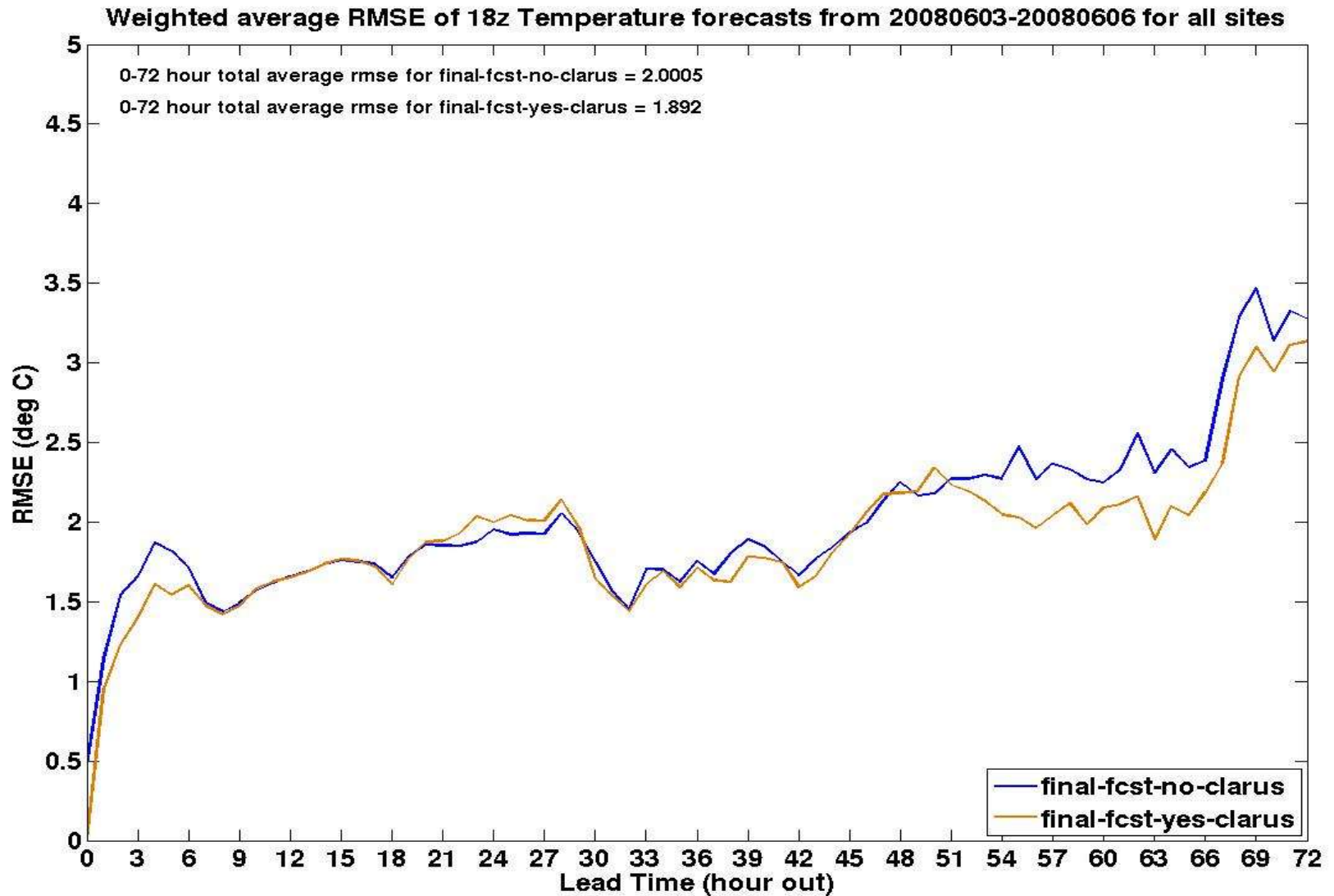


Cold Case

Median Absolute Error of 18z Road Temperature forecasts from 20090112-20090115 for all sites



Hot/Humid case



Summary

- Inclusion of *Clarus* data did not degrade the gridded forecast
- Inclusion of *Clarus* data provides small but significant improvement in many of the meteorological variables - especially road temperature point forecasts
- Inclusion of *Clarus* data showed improvement in the forecast of fine-scale precipitation features but not significant overall